

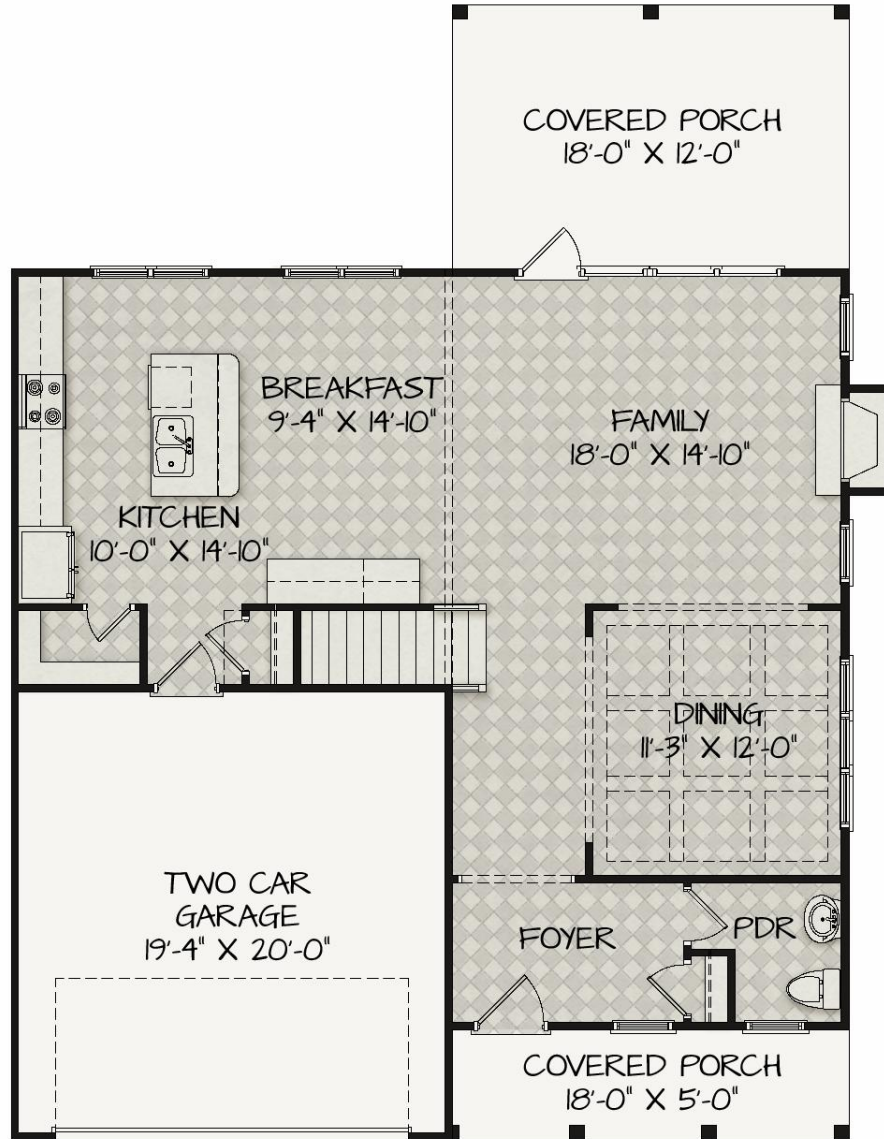
THE GROVE PARK in WYND WATER



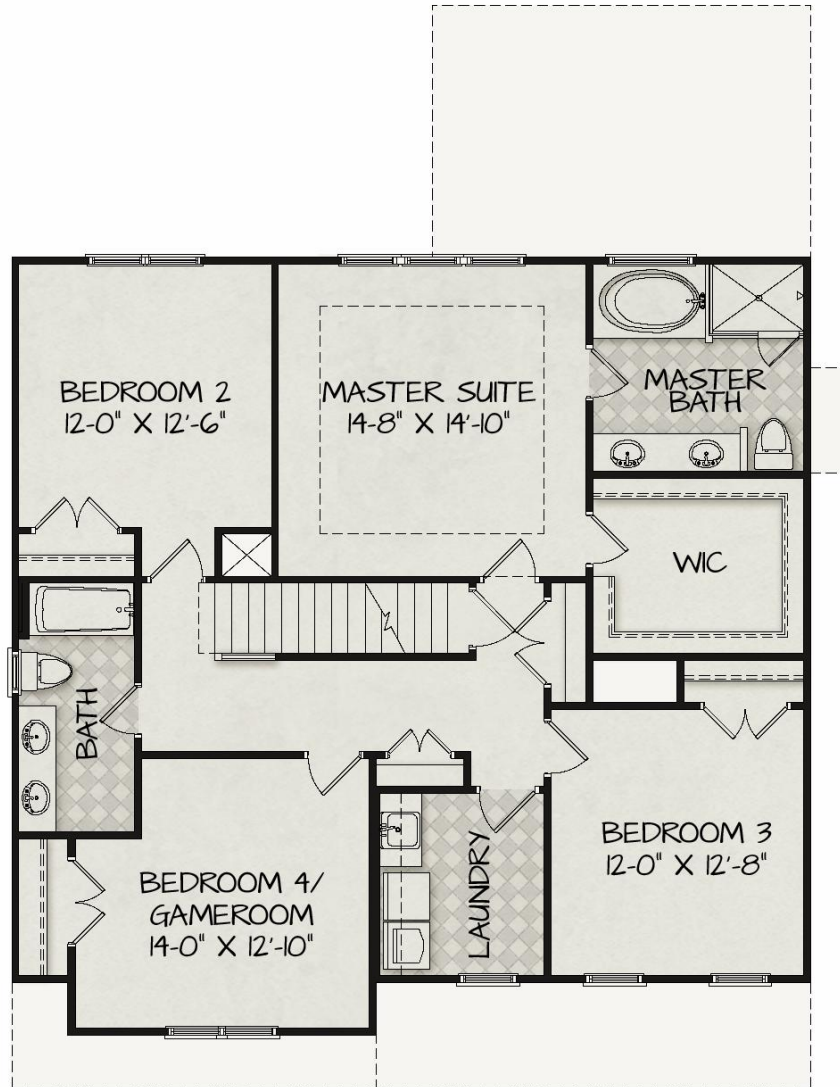
4 Bedrooms / 2.5 Baths / 2311 SqFt*

* HOUSE DETAILS SHOWN WITH UNFINISHED THIRD FLOOR, FINISHED DETAILS ARE AS FOLLOWS: 4 BEDROOMS / 2.5 BATHS / BONUS ROOM / 2858 SQFT

First Floor



Second Floor



Third Floor/ Unfinished Attic

