

The Dartmouth

14 Evergreen Lane / Lot #155

Priced as described: \$321,900



The open concept Dartmouth plan features split-entry front garage and stone accents for a unique look! James Hardie siding and charming gable accents give a custom finish. Designed for first floor living this plan also includes a large bonus room over the garage with closet storage perfect as a 4th bedroom! Great Room vaulted ceiling with beams, Formal Dining Room with coffered ceiling and custom wainscoting plus a Breakfast Nook and eat-in kitchen island create more than enough room for holiday entertaining or hosting the big game. The Dartmouth is chock full of great features like a large screened porch, side by side laundry layout with our Drop Zone bench & coat rack, generous barn door pantry and the Master Spa Bath upgrade featuring freestanding tub, curbless tiled shower and wood-look floor tile!

2,350 sqft

3 Bedrooms | 3 Baths

MLS # 100055060

910-444-2434



WyndWater and Signature Top Sail NC, Ltd are committed to upholding the standards of the Fair Housing Act. All information contained in this brochure is deemed reliable but is not guaranteed.

WYND WATER

Stand Out Features



14 Evergreen Lane / Lot #155

Priced as described: \$321,900

Exterior

- ◇ James Hardie Siding in Cobble Stone color with stacked stone accents in Bucks County color
- ◇ 3M Algae-proof Atlas 30-year architectural shingles in Pristine Black color
- ◇ Fully sodded lawn with multi-zone Irrigation System
- ◇ Large screened porch with ceiling fan/light off the rear of home

Interior

- ◇ Coffered ceiling & custom wainscoting in the Formal Dining area
- ◇ Vaulted Great Room ceiling with beams
- ◇ Side by side configuration in the generous Laundry Room with built in storage & mud room coat rack/cubbies
- ◇ Gas fireplace with custom white trim & porcelain tile surround in Magnolia color

Kitchen

- ◇ Coffee color 42" wood cabinets with soft close doors & drawers, travertine tile back splash paired with under cabinet lighting
- ◇ Ouro Brazil color granite countertops & stainless steel farm sink
- ◇ Whirlpool Stainless Steel Appliances: electric cooktop with range hood, dishwasher, wall oven with microwave
- ◇ Large granite eat-in island with custom wainscoting & decorative post legs

Master Suite

- ◇ Located on the 1st Floor
- ◇ Presidential trimmed ceiling with ambient rope lighting, recessed lights & ceiling fan
- ◇ Large Walk-In closet with Drawer Tower

Master Bath

- ◇ Stunning Master Spa Bath upgrade that includes a tiled curbless shower in Sandcastle color with Bliss color mosaic accent, a white freestanding tub and wood-look floor tile in Wilmington White color.
- ◇ Dual sink upgraded vanity with coordinating framed mirror
- ◇ Toilet in separate water closet for privacy

Riptide Extras

- ◇ Hand scraped Mohawk Stoneside Hickory floors in Country Natural color throughout the main living spaces
- ◇ App controlled Lyric Alarm & Comfort System!
- ◇ Navien Tankless Gas Water Heater
- ◇ HERS Energy Rated Certified by RESNET
- ◇ 7 1/4" baseboards throughout plus 3 1/4" door & window casings along with custom window sills
- ◇ 2-10 Home Warranty at no charge providing 1-year workmanship, 2-year systems and 10-year structural coverage

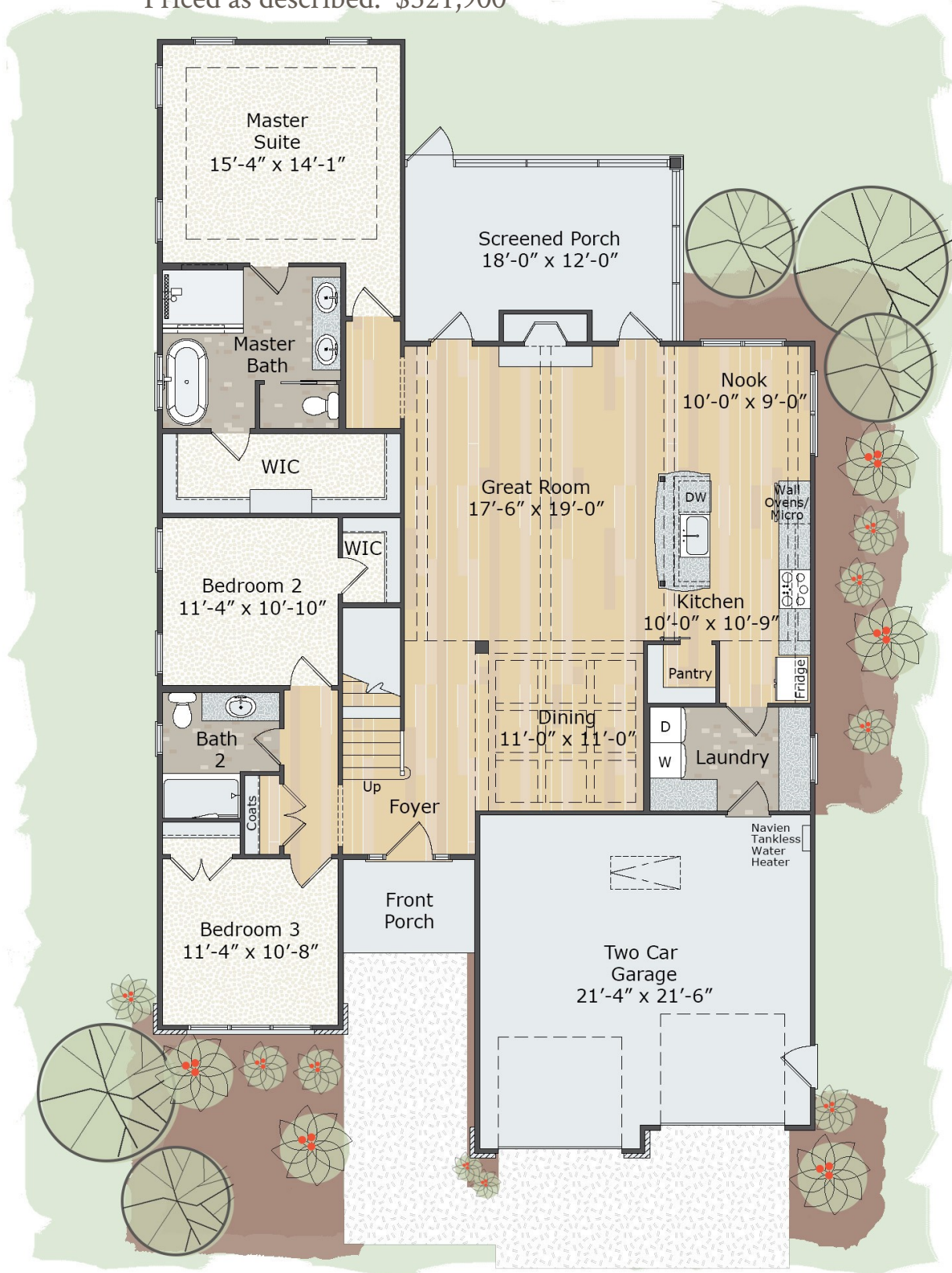


The Dartmouth—1st Floor



14 Evergreen Lane / Lot #155

Priced as described: \$321,900

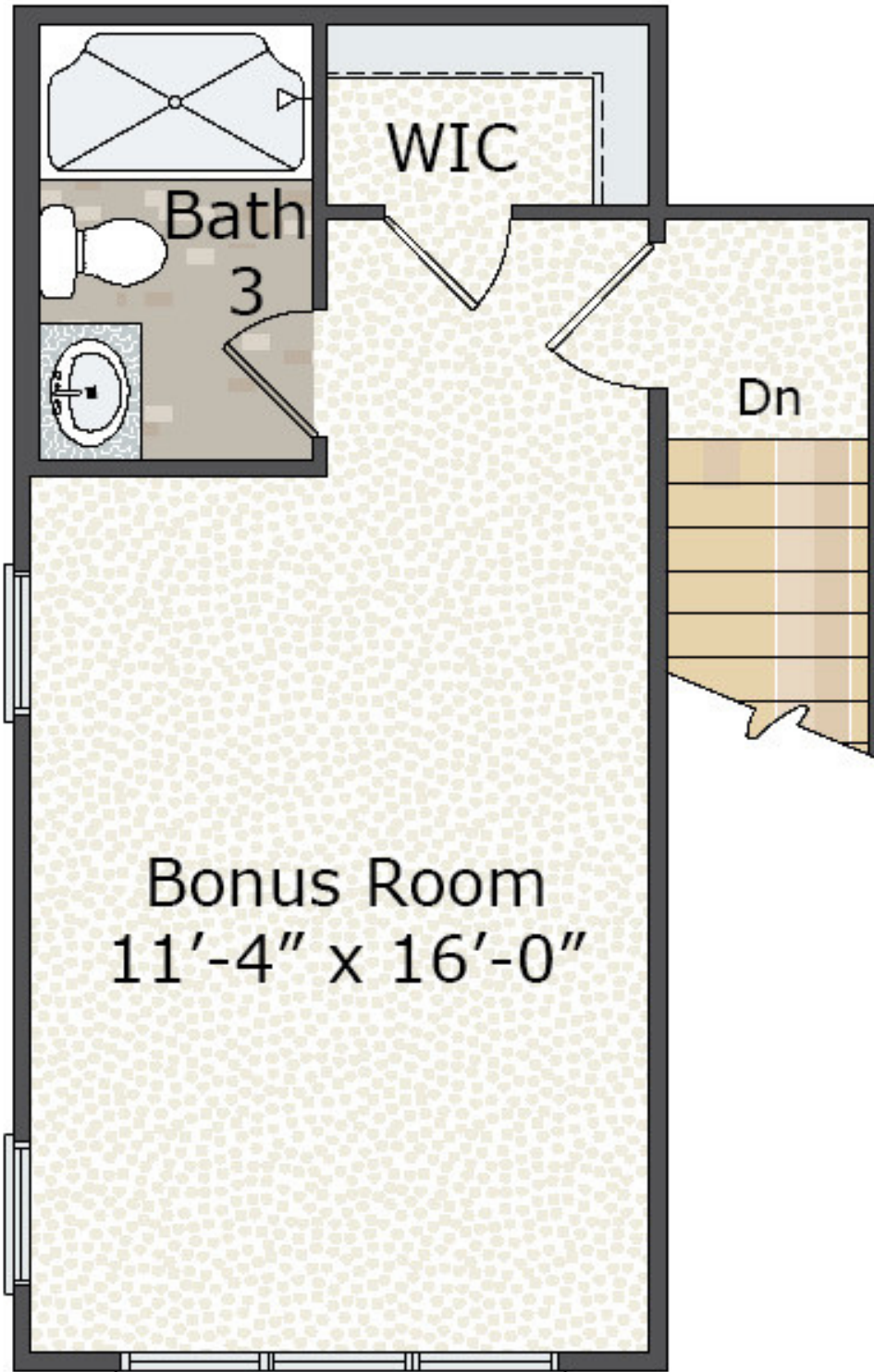


WyndWater and Signature Top Sail NC, Ltd are committed to upholding the standards of the Fair Housing Act. All information contained in this brochure is deemed reliable but is not guaranteed.

WYNDWATER

The Dartmouth—The 1.5 Floor

14 Evergreen Lane / Lot #155
Priced as described: \$321,900



WyndWater and Signature Top Sail NC, Ltd are committed to upholding the standards of the Fair Housing Act. All information contained in this brochure is deemed reliable but is not guaranteed.



Warranty & Sales Contacts



Secure in the quality we deliver with 2-10 Home Buyer's Warranty. Riptide Builders provides at no cost to you, the complete 1-2-10 warranty coverage. The 2-10 Home Buyers Warranty® structural home warranty coverage are HUD-approved and fully transferable.

- ◆ Our 1 year warranty provides surety coverage against defects in workmanship and materials.
- ◆ Our 2 year warranty provides systems surety coverage for defects in wiring, piping, and ductwork in electrical, plumbing, heating, cooling, ventilating and mechanical systems.
- ◆ Our 10 year warranty provides coverage for structural defects to load-bearing components protecting properties right from the closing day.



LONG LIVE HAPPY HOMES®

Learn more at www.RiptideBuilders.com/Warranty

The Riptide Sales Team is available to answer all your questions and personally tour you through our finished homes, model homes and jobsites. Please call for more information, visit our website email us. We will be onsite beginning mid-April 2017 every day!

Come on out and see what we have to offer!

910-444-2434 | info@riptidesalesteam.com | www.RiptideBuilders.com



WyndWater and Signature Top Sail NC, Ltd are committed to upholding the standards of the Fair Housing Act. All information contained in this brochure is deemed reliable but is not guaranteed.

WYND WATER