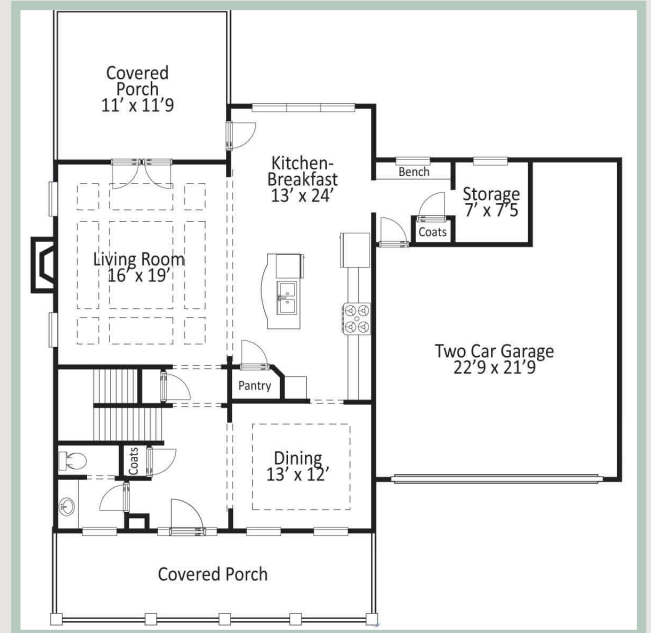
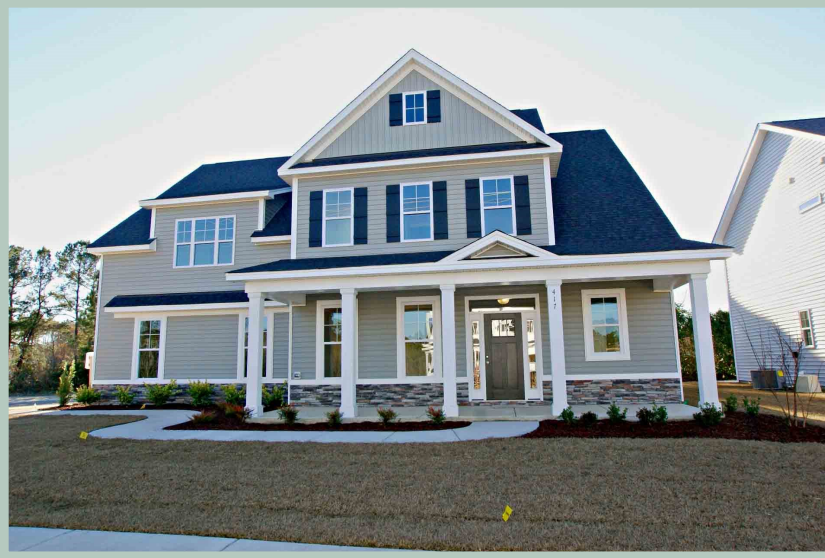


Topsail Floorplan

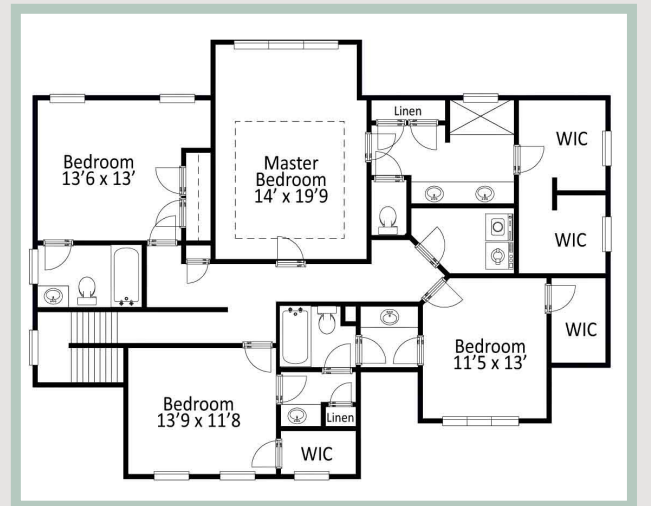
417 Aurora Place/ Lot #182

Priced as described: \$344,750



The Topsail 2 story, side load garage floorplan offers four bedrooms, three and a half baths within 2,887 sqft and is loaded with quality features.

This beautiful home with exterior stone accents offers spacious rooms and a functional floorplan. The formal dining room features wainscoting, beautiful tray ceiling, and views over the front yard. The two-car side load garage leads to handy mudroom with built in bench and large storage room before entering the impressive kitchen. The first floor has many desired features such as spacious foyer, front entrance coat closet, powder room, coffered ceiling in living room with 3 panel sliders that open to a relaxing covered back porch.



**Published SqFt. is an approximation and not represented to be an exact measurement
**PRICES, PLANS AND FEATURES ARE SUBJECT TO CHANGE WITHOUT NOTICE



WyndWater and Signature Top Sail NC, Ltd are committed to upholding the standards of the Fair Housing Act. All information contained in this brochure is deemed reliable but is not guaranteed.



Specifications & Features



417 Aurora Place/ Lot #182

Priced as described: \$344,750

- ◇ 2,887 Square footage
- ◇ 4 Bedrooms
- ◇ 3.5 Baths
- ◇ Living Room 19 x 16
- ◇ Dining Room 13 x 12
- ◇ Kitchen 13 x 15
- ◇ Breakfast Room 9 x 13
- ◇ Master Bedroom 14 x 19.9
- ◇ Bedroom Two 13.6 x 13
- ◇ Bedroom Three 13.9 x 11.8
- ◇ Bedroom Four 13 x 11.5
- ◇ Covered Porch 11 x 12
- ◇ Storage Room 7 x 7
- ◇ Mudroom



Second floor of the Topsail offers space and convenience for the entire family. The luxurious master suite has a gorgeous tray ceiling, private bath with huge tiled shower, dual vanity and grand his & her walk in closet. Bedrooms 2 & 3 are front facing with walk-in closets, sharing a Jack-and-Jill style bathroom. Fourth bedroom has backyard view, large closet and a private bath. Also, there's a conveniently located upstairs laundry room with ceramic tile.



Interior Features

- ◆ Wainscoting
- ◆ Gas Logs
- ◆ Walk-in Pantry
- ◆ Cased Openings
- ◆ Coffered & Tray Ceilings
- ◆ Storage Room
- ◆ Stainless Appliances (No Refrigerator)
- ◆ Jack-n-Jill Bathroom
- ◆ Designer Bathroom Plumbing Fixtures

Exterior Features

- ◆ Covered Front/Rear Porches
- ◆ Front Irrigation System
- ◆ Builder/Termite Warranties
- ◆ Community Pool
- ◆ Side Load Garage



**Published SqFt. is an approximation and not represented to be an exact measurement

**PRICES, PLANS AND FEATURES ARE SUBJECT TO CHANGE WITHOUT NOTICE



WyndWater and Signature Top Sail NC, Ltd are committed to upholding the standards of the Fair Housing Act. All information contained in this brochure is deemed reliable but is not guaranteed.



Christina Block & Associates



Christina Block

WyndWater Listing Agent
Christina Block & Associates
910.616.2698 mobile/text
Christina_Block@msn.com



Tracy Maurer

WyndWater Onsite Agent
Christina Block & Associates
910.616.5842 mobile/text
Tracy_Maurer@seacoastrealty.com



Come By to Visit our Furnished
Model & On-Site Agent at

61 N. Lamplighters Walk

Monday –Saturday 11 am—5 pm

Sunday 1 pm—5 pm

**COLDWELL
BANKER** 

**SEA COAST
ADVANTAGE**



WyndWater and Signature Top Sail NC, Ltd are committed to upholding the standards of the Fair Housing Act. All information contained in this brochure is deemed reliable but is not guaranteed.

WYNDWATER